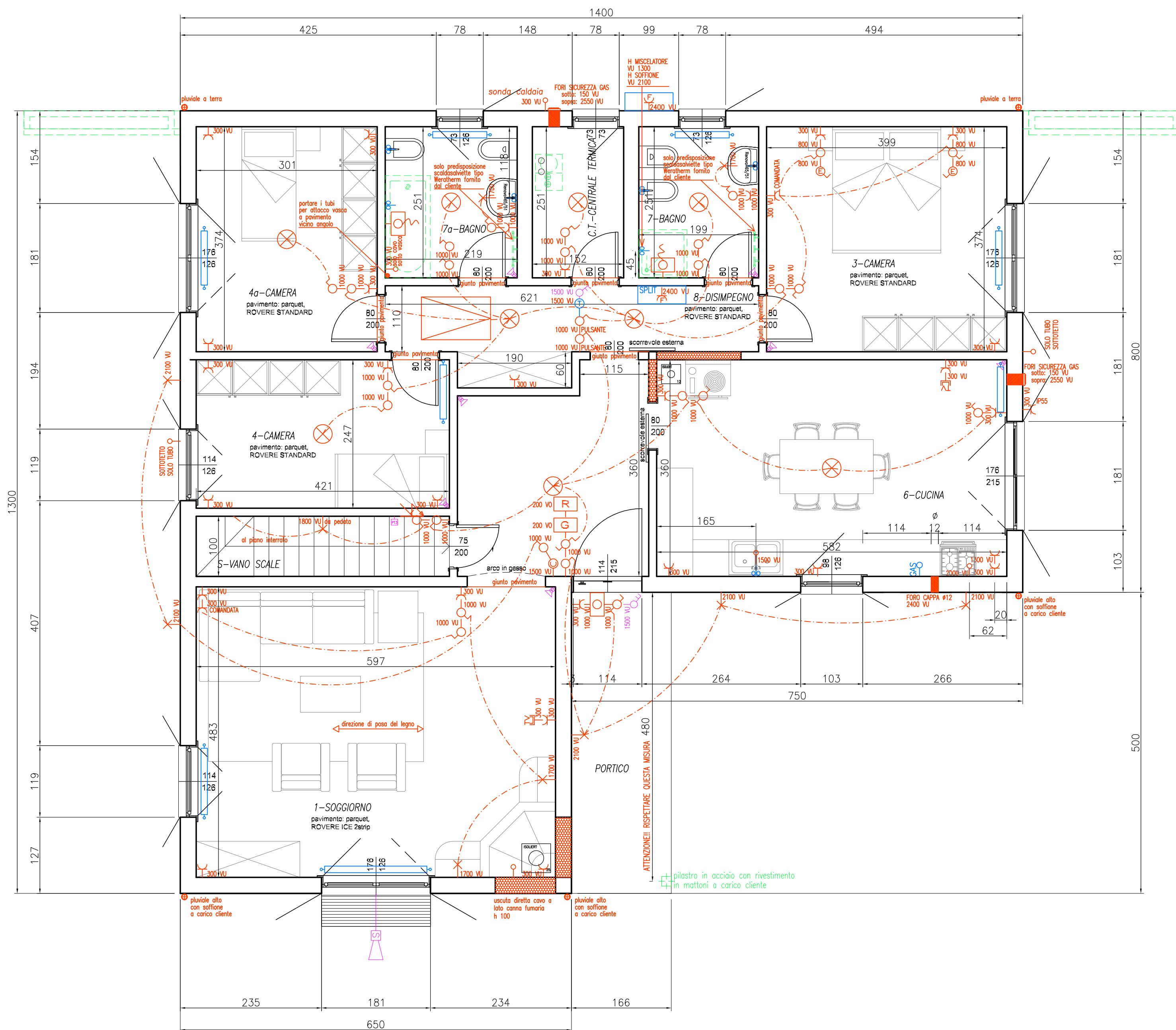


The technical drawing consists of two parts:

- PART.1 - quadro elettrico**: A side view of the lighting fixture installation. It shows a ceiling (soffitto) and a floor (pavimento). The fixture is mounted on the ceiling. The distance from the ceiling to the floor is 270. The distance from the ceiling to the bottom of the fixture is 120. The distance from the floor to the bottom of the fixture is 30. The fixture is labeled "Q.E." and "PT3 PT3".
- DETTAGLIO VU / VO**: A detail view of the fixture. It shows the "soffitto" (ceiling) and "pavimento" (floor). The distance from the ceiling to the floor is 270. The distance from the ceiling to the "ASSE" (axis) is 160. The distance from the "ASSE" to the floor is 110. The "ASSE" is labeled "PLACCA".



PIANTA PIANO TERRA