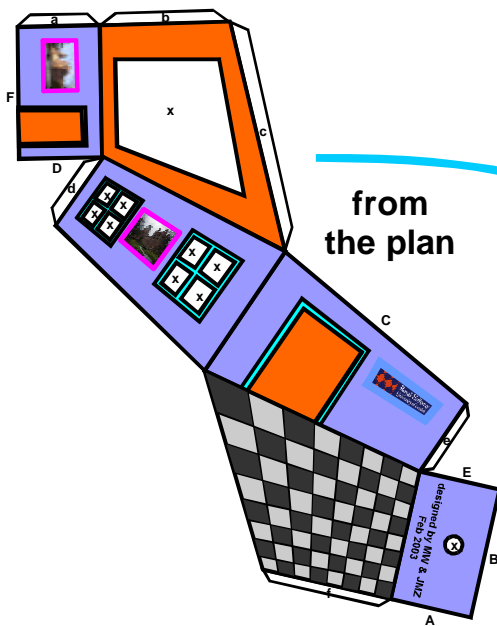


# Construct your own desktop Ames Room !

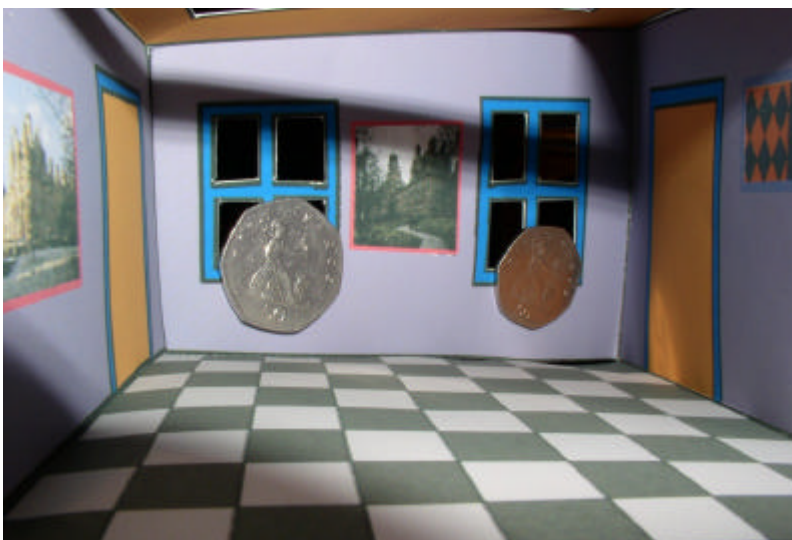
- (1) cut out the shape along black outline
- (2) cut out the inspection hole, ceiling and inner bits of the windows (marked by 'x')
- (3) glue tab a behind 'A', tab 'b' behind 'B', etc.
- (4) you will now have oddly shaped room with an inspection hole on one side
- (5) look through the inspection hole at to objects of identical size (e.g. paperclips) positioned in front of or behind the two windows

... the objects appear larger on the left than on the right side ...

(in general, this effect is better visible if you construct a larger Ames Room  
- print as big as you can!)



**for more information visit**  
**<http://www.pc.rhbnc.ac.uk/illusions/index.htm>**



and this is what you can see  
through the inspection hole

